

inView 360HD™

See and Record full Perimeter View around your Vehicle

Suited to a wide range of fleet vehicles including School and Transit Bus, Waste and Fire and Emergency.

See and record the entire perimeter of your vehicle during low speed maneuvers using image overlay and instantaneous reverse view to help reduce the danger of hitting parked vehicles and other obstacles. Unlike other systems on the market, there is no need for a separate recording system.



Full Around Vehicle Monitoring (AVM)

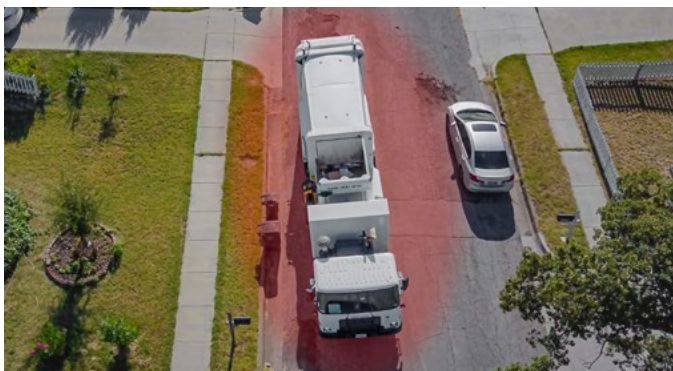
The standard system consists of four cameras to provide a 2D, four camera stitched-around-vehicle view (top view). The system is capable of connecting another 1-2 cameras to monitor other areas. All connected cameras are recorded.

Instantaneous Reverse View

Reverse view is available immediately after engine ignition and when vehicle operator has shifted into reverse gear (before the system is fully initialized). Extra hardware option which also includes an AHD monitor, is required.

Other Meta-Data

The GPS receiver and built-in G-sensor provide other meta-data automatically captured by the recorder.



System Components:



Electronic Control Unit (ECU)
Front Cover Removed



Electronic Control Unit (ECU)
with Front Cover



External Wi-Fi Antenna



External IR Sensor



Ultra-wide Camera with Housing (x4)



Passive CVBS Splitter



External GPS Antenna



Push Button
(x3, Red, Green, Black)

1.877.630.7366
safefleet.net

SAFE  FLEET
Driving Safety Forward™

inView 360HD™

See and Record View of the full Perimeter around your Vehicle

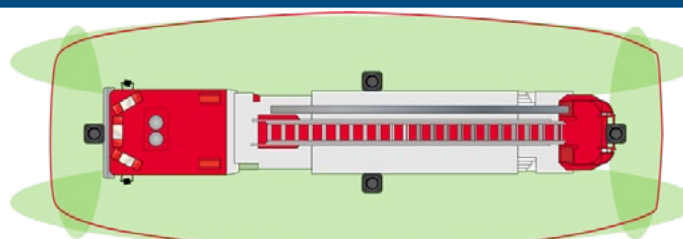


Illustration displays 2D stitched image

The four live images are combined. The overlapping corners are automatically blended and stitched, providing an around vehicle view with minimal blind spots.

System	
Operating Voltage	8 VDC to 32 VDC. Reverse polarity protection on power
Operating Temperature	-20°C to 70°C
Storage Temperature	-40°C to 85°C
Self-Diagnostics	On boot. LED indicators, on-screen indicators
Views	Top View, 2D stitched around vehicle view / Front / Reverse / Left / Right or Top View combined with Front/ Reverse / Left / Right
	Auto-switched based on external signal triggers: Left / Right / Reverse Signals
	Manual-switched with an external push button
	Instantaneous reverse view after engine ignition and reverse gear engaged
Calibration	Supports manual, Wi-Fi, Auto and on-screen modes
Trigger Signal Voltage	6 to 32 VDC
Video Download ¹	Via Wi-Fi
Configuration	Via IR, Wi-Fi, monitor (touch screen or mouse driven)
Video Recording	Supported; continuous
Frame Rate	1080p @30fps NTSC, @25fps PAL; all channels
Compression/Encoding	H.264 (2 Mbps / 4 Mbps compression modes)
Storage ²	Up to 4 SD cards in series; max capacity 256 GB for a total of 1TB max system storage.
	Supports 720p (CVBS) and/or 1080p (HD); touch screen capable.
Monitor	Optional 7" Monitor (HDM_7IN), sold separately.
	RTSP support via ethernet
Video Streaming	RTSP support via ethernet
Vehicle Image Library	Editable and Preloaded with 8 vehicle types

¹ Subject to transmission conditions

² SD cards sold separately. Recommended: Class 10

Compression Modes	Video Clip File Size Guidelines	Recording Length (hrs)	
		128 GB	256 GB
2 Mbps	4.3 GB / 4 Cameras / hr	30 hours	60 hours
4 Mbps	8.5 GB / 4 Cameras / hr	15 hours	30 hours

These guidelines are subject to compression variations. Data can be extrapolated for other SD sizes.

ECU	
Enclosure	Enclosure: die-cast aluminum ADC12; lockable / removable front cover (metal).
Video Outputs	1080p / CVBS, 2 ports
Video Inputs	Up to 6; 4 cameras to provide top view, 2 spare channels
Trigger Signals	Left / Right / Reverse / Panic (event marking), 6-32VDC @ 0.12 to 0.63 mA.
Camera Port Impedance	75 Ω
Video Output Port Impedance	75 Ω
GPS	<28mA @ 3.3V
Dimension	135W x 120L x 40D mm; 5.8W x 6.8L x 1.5D in
IR Sensor	3m extension
Camera	
Enclosure	Die-cast aluminum ADC12 with a 304 stainless steel bracket; IP69K-rated
Dimensions	52 Wx 42L x 40D mm; 2.0W x 1.7L x 1.6D in (approximate)
Sensor	2.9 mega-pixel CMOS
Power	ECU-supplied
Voltage	12VDC @65 mA
Focal Length	2.8mm
Field of View (FOV)	130° (V) x 190° (H)
SNR	>80dB
Other	
G-Sensor	Equipped; Built-In
GPS	External Receiver
Wi-Fi	External antenna; 802.11 b/g/n/ac
Language	English / French / German / Dutch
Units of Measure	Metric / Imperial
Ports	USB / RS232C / RS485 / Can Bus
Homologation	FCC / EMark / CE
Video Player	HD Player (native) - with routing information
	H.264 compliant - without routing information
	Recorded video selectable/filterable by event types

1458-InView360HD-SS-SF-032525

Copyright ©2025 Safe Fleet and its subsidiaries. All rights reserved. No part of this publication may be reproduced by any means without written permission from Safe Fleet. The information in this publication is believed to be accurate. However, Safe Fleet does not make any representation or warranty to that effect and does not assume responsibility for any consequences resulting from use of such information. Revisions or new editions of the publication may be issued (or not issued) in our discretion to incorporate such changes.

1.877.630.7366
safefleet.net

SAFE  FLEET
Driving Safety Forward™