



Why choosing a
SAFE FLEET
SAFETY
SOLUTION
gets you so
much more

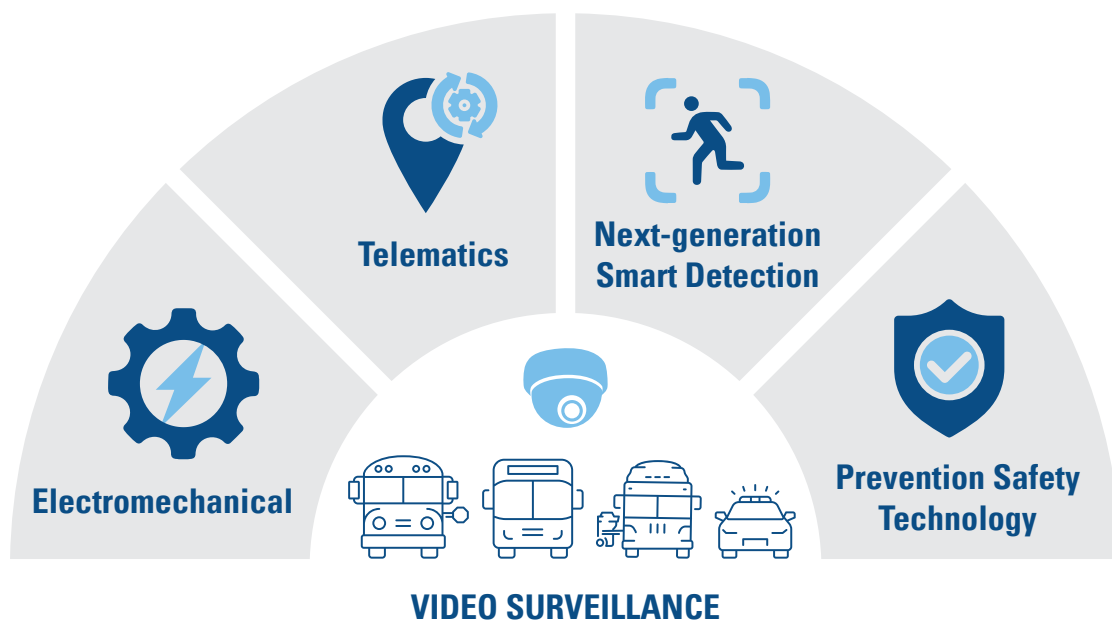


Experience the Safe Fleet Advantage

The primary reason you invest in mobile video is to gain video evidence. The lowest cost solutions are designed for generic “mobile” applications. These can often be unreliable in providing the very information they were intended to deliver. Price isn’t the only thing to consider when investing in a mobile video solution. Many systems might cost less up front, but don’t last as long, aren’t scalable or backward compatible, and aren’t designed to work well together as a platform. With Safe Fleet you can expect the highest value, reliability and the lowest total cost of ownership.

The Power of the Safe Fleet Platform

Safe Fleet is the largest provider of mobile video solutions in North America. We equip over two million commercial, fire, law enforcement and passenger transportation vehicles with video solutions that improve visibility and security. We're the only fleet video provider to fully integrate with electromechanical, telematics, and next-generation smart detection and prevention safety technology.



- Our customers get best-in-class technology and innovation gained from working with every type of fleet vehicle, from buses and fire trucks to commercial vehicles and police cruisers.
- We have the deepest understanding of fleet safety requirements and full ownership of on-vehicle products with a focus on integration.
 - Ownership of our intellectual property (IP) ensures stability and reliability. It also reduces risks associated with data integrity and IT security.

Monitor System Health Status

Making sure your video system is always performing is critical to ensuring your fleet's safety and security. Safe Fleet has many built-in options to monitor video system health and ensure operational up-time:



Driver Indicator panel for real-time video system status



Recorder Front-Panels provide enhanced system status indicators



Recorders support TCP/IP connectivity and Web OS, providing:

password protected
access to live/
recorded video

in-depth log files

system health
reporting

configuration and
firmware update
menus for fleet
administrators



Digital evidence management software (when Wi-Fi is enabled) manages and facilitates video uploads, provides in-depth and automated system health reporting and manages bulk updates

Superior Warranty & Maintenance Options

Industry-leading in-vehicle warranty and a high-level of service is standard:

Safe Fleet leads the industry in reliability with an average failure rate of

less than 1%

We provide customizable extended

warranty options



We offer a

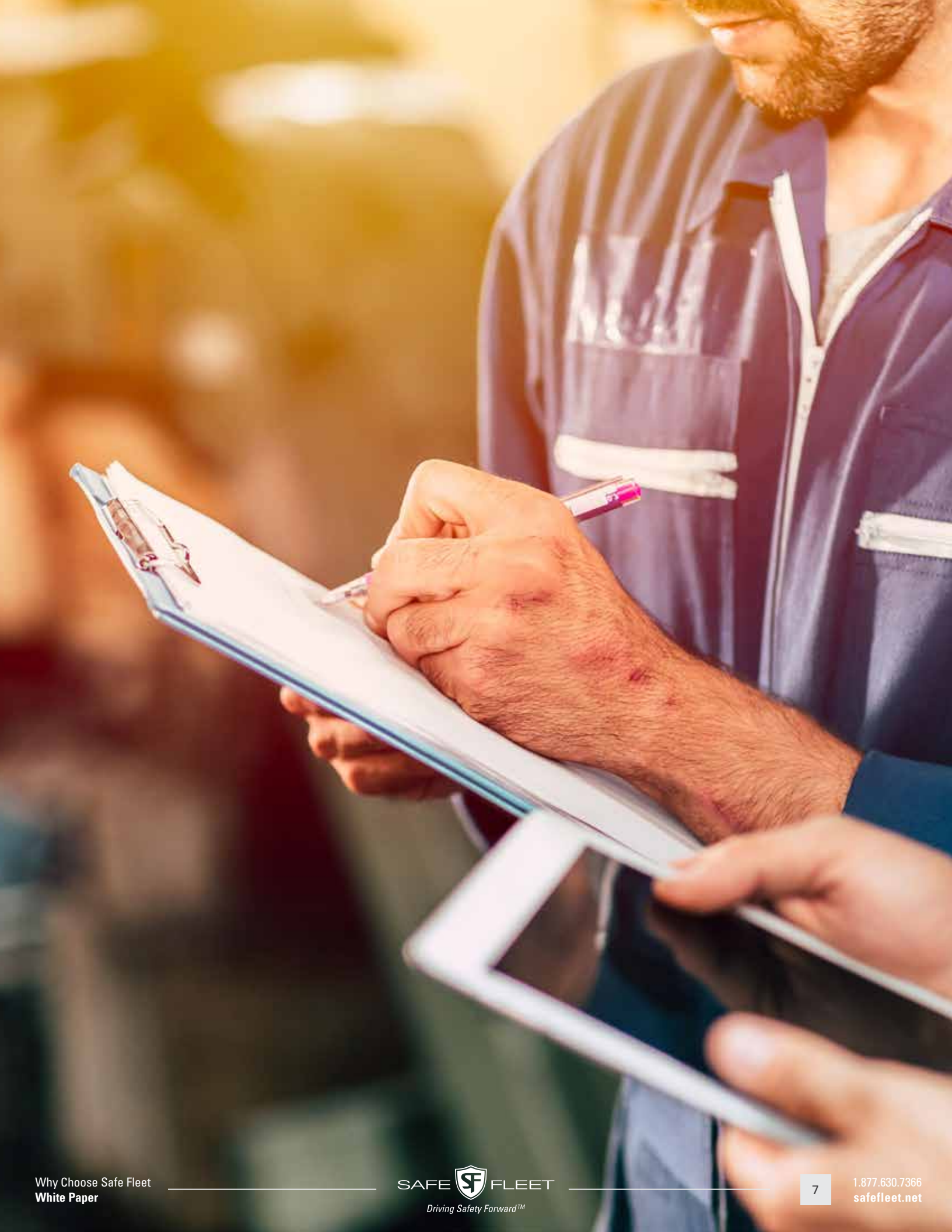


Comprehensive Preventative Maintenance Plan and a **nationwide install and support network.**

Maintenance plans feature aftermarket diagnostics & maintenance, bundled SaaS offerings and cloud storage options.

Safe Fleet stands apart from other video surveillance vendors by maintaining ownership and oversight of:

- design, software and hardware development
- data integrity and security protocols



Future Proofed for Better Value

Safe Fleet focuses on increasing system value and reducing total cost of system ownership. Compatibility across legacy, current and future platforms is a key part of achieving this. Fleets can upgrade components like cameras and recorders as budgets allow. This enables reuse of components and accessories as long as technically feasible.

Recorders	Gen 1 Series 2012	Gen 2 Series 2017	Gen 3 Series 2021
Cameras Analog Standard-Definition	✓	✓	✓
Analog High- Definition (720P)		✓	✓
Analog High- Definition (1080P)			✓
Review S/W	Safe Fleet View		
			Evidence Manager
Wireless Software	Commander 4.0	Commander 5.0	

TL to DH maintains hardware design & compatibility with cameras through 2012

Safe Fleet View currently supported by DH Series/EM will be forward focus

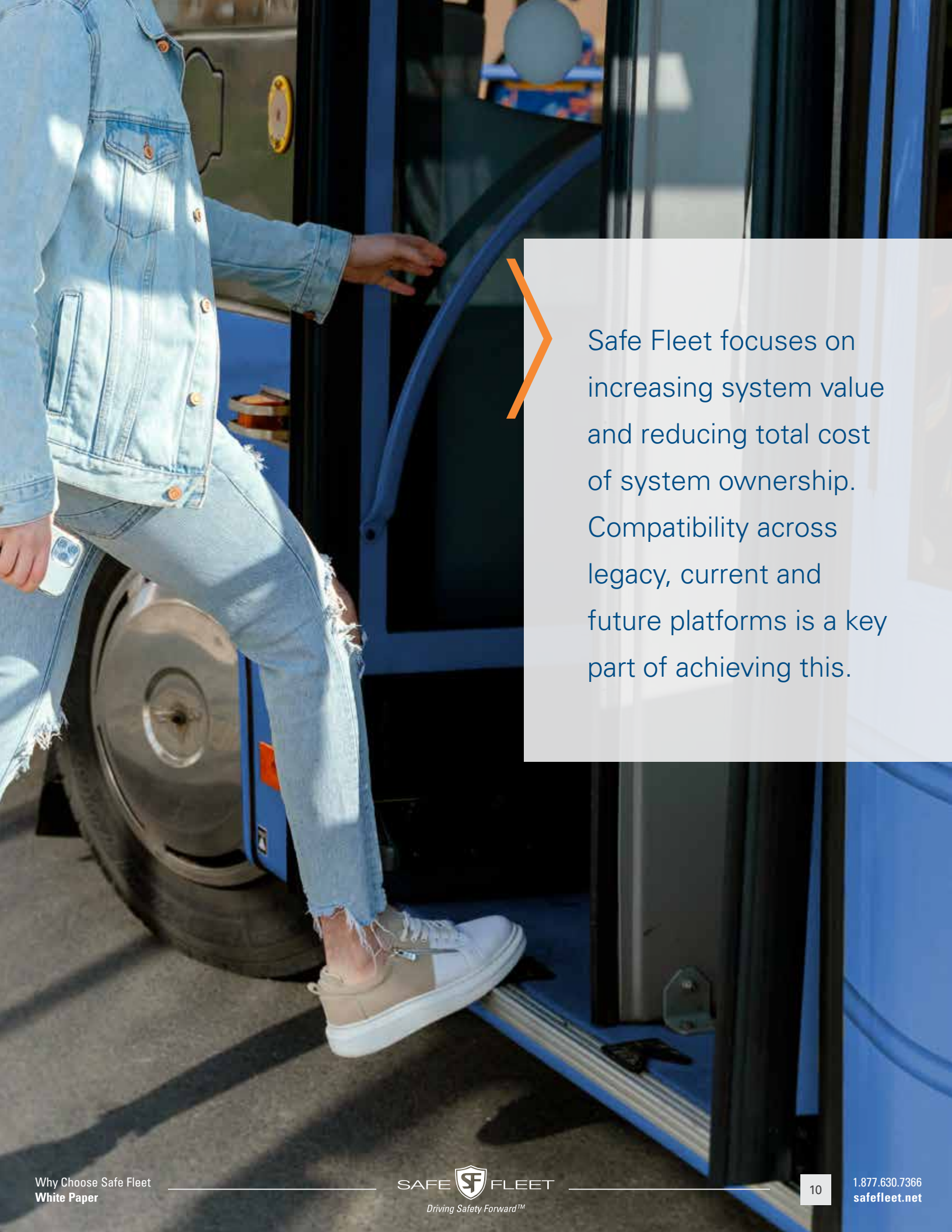
Commander 5.0 continues to be compatible with DVRs back through 2012



Longevity is the Goal of Every Release

- A vertically integrated focus and decades of experience has enabled Safe Fleet to maintain system backwards compatibility as long as possible. This is significant in fast-paced technology markets where changing needs outpace product capabilities.
- Safe Fleet continues to invest in the development and enhancement of our solutions. Firmware versions are provided free of charge over the life of the platform. Product updates are distributed and implemented using a variety of methods including:
 - Load file to USB media and direct connection to recorder
 - Transmit file from PC direct to recorder
 - Push file from a central server to fleet recorders individually, or in bulk via wireless deployment services

Overall reliability, lifetime product updates and a proven track record of delivering products with backwards compatibility cannot be underestimated.



Safe Fleet focuses on increasing system value and reducing total cost of system ownership. Compatibility across legacy, current and future platforms is a key part of achieving this.

Purpose-built for Real World Transportation

Intentional, Proactive Design

With experience and expertise gained from over 20 years in the business, Safe Fleet designs and develops for real-world and market specific requirements. We test (field and environmental) against a wide-range of known scenarios specific to each market we serve.



Recorders feature a design proven reliable over a 20-year span and 2 million vehicles. Many customers continue to benefit from legacy recording platforms that have remained in service well beyond their expected service life. These customers continue to rely on Safe Fleet as a trusted partner.



Safe Fleet has standardized parts and accessories across recorder platforms. Recorder wiring, storage media, sensors, cameras and modules are interchangeable between older and newer products. This simplifies the upgrade process and harmonizes spare part inventories. It also increases the ROI of previous purchases.



Mid and high-level recording options provide flexibility to upgrade or add as needs evolve, increasing system scalability.

Smart Power Management

Smart-Start / Smart-Stop technology ensures better protection for your investment. This feature increases reliability over the long-term and safeguards digital evidence:



User-configurable Power-on Delay, allows for voltage irregularities during ignition start



User-configurable timers (Record-Delay / Power-Delay) reduce power draw after a bus is turned-off



Integrated SuperCap technology provides continuous power in brownout or power loss scenarios. This allows safe file completion and recorder shut-down (reduces file corruption)





Shock and Vibration Dampening

Safe Fleet recorders are designed and tested for deployment and reliability within the markets we serve.

- Many off-the shelf recorders provide limited shock and vibration isolation. Often limiting isolation to the storage media, they do not take into account:
 - variations in media form factor
 - mounting orientation
 - specific vehicle types

This can lead to decreased reliability and overall product life.

- All Safe Fleet recording platforms use a rigorously tested, shock and vibration dampening solution. This protects all internal components. It also addresses variables associated with storage media, mounting orientation and industry and vehicle specific environmental characteristics.

Intelligent Thermal Management and Design

Safe Fleet recorders continuously compensate, and proactively manage temperature variations and extremes throughout operational cycles. This vastly improves product reliability and longevity.

SMARTTEMP:

Automatically enables a variety of temperature management tools. These provide a more consistent operating environment and/or mitigate environmental extremes. This prevents damage, improves reliability and prolongs the life of storage media.

ACTIVE HEATING / COOLING FAN:

This is a core component of SmartTemp. The thermostatically controlled fan and custom venting design delivers filtered airflow across all internal components. The function enables consistent operation and prolonged lifespan in high-heat and extreme cold environments.

ACTIVE HEATING ELEMENTS:

Strategically located heating elements ensure internal components operate in specified thermal operating ranges. This function is used in conjunction with the Active Fan and custom venting design. Heat is evenly distributed throughout the inside of the recorder.



Many off-the-shelf products claim wide temperature ranges. Yet those products use sealed enclosures that rely on far less effective, passive cooling methods. Compounding the issue further, off-the-shelf products feature sealed hard drives, within sealed recorders. They are then mounted in enclosed cabinets within the vehicle. Operating any technology outside specified ranges for extended periods of time significantly impacts reliability and longevity.



Superior Intellectual Property & Security

Safe Fleet stands apart from other video surveillance vendors by maintaining ownership and oversight of:

- design, software and hardware development
- data integrity and security protocols

INTELLECTUAL PROPERTY:

Safe Fleet continues to design and develop its core hardware and software products. We retain intellectual property rights and ownership of the product development roadmap.

HARDWARE SOURCING:

Safe Fleet establishes long-term partnerships with a select group of contract manufacturers. A focus on strategic geographic regions helps reduce risks associated with increasing tariffs and expanding import restrictions.



Many industry peers offer white labelled 3rd party hardware and software. Design, Development and intellectual property (IP) rights often remain off-continent. A partner with ownership of application-specific design elements and data integrity and security can further mitigate risk.

Interior/Exterior Camera Options

Every Safe Fleet camera meets the application needs and requirements of markets we serve.



Analog Standard Definition (D1), Analog High-Definition(720p/1080p) and IP (up to 4K) cameras are available depending on recorder platform and individual needs



Cameras feature Day/Night CCD with Infrared Illuminators for images in total darkness



3-Axis Gimbal design enables vertical/horizontal mounting options. And 3-dimensional adjustment enables image straightening on uneven surfaces that are common in a vehicle



All interior cameras feature high-fidelity, omni-directional microphone and tamper-resistant mounting hardware



Interior dome cameras prevent tampering with field of view while maintaining serviceability



Local video output enables direct monitor connection for field of view validation and direct camera troubleshooting



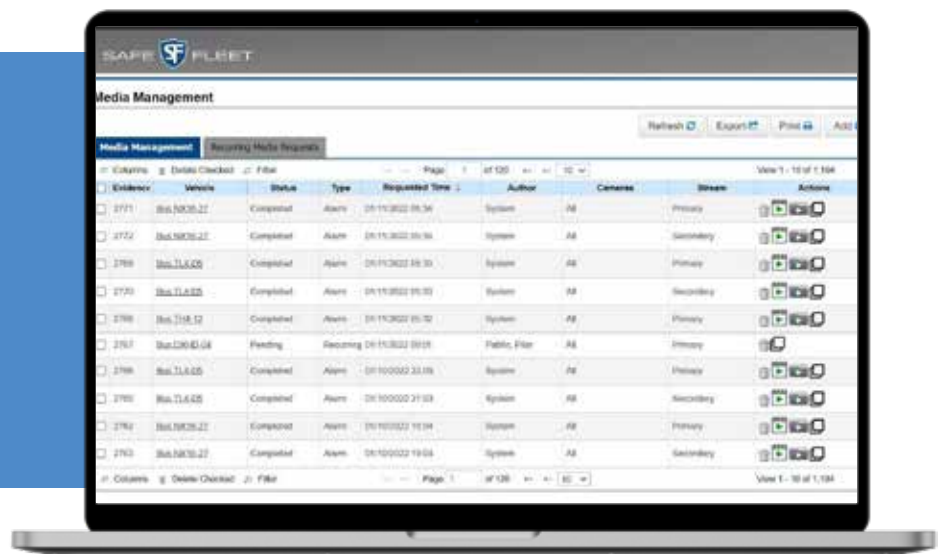
All exterior wedge cameras are mechanically designed to isolate the mounting holes from the internal camera components. This reduces or eliminates water intrusion. Exterior cameras also have thermostatically-controlled internal heating and a proprietary one-way venting system for condensation dissipation



Evidence Management

Evidence Management Software is the backbone for accessing, searching, reviewing, processing and sharing video evidence. Our systems range from local PC evidence management to the most demanding and complex, multi-vehicle/user/site enterprise management applications trusted by the largest law enforcement, public transit and education agencies in North America.

Safe Fleet software integration and legacy platform compatibility provides consistency and stability.

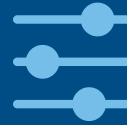




Legacy recording platform compatibility through 2012



Local Evidence Manager Application / Unlimited User License



Simple and intuitive controls



Multiple search capabilities (time, date, alarm, location)



Video system health status, fault reporting and vehicle diagnostics (ie voltage, temperature etc.)



Password protected



Static redaction / AI driven Dynamic Facial Redaction



Verifiable Authenticity



Hybrid / Cloud Evidence Management Architecture



Cloud Sharing / Case Management

ANYWHERE ACCESS & SECURITY OF SENSITIVE DATA



Flexible Video Export



Ensure data integrity

Prevent unauthorized access

Create evidence packages

Store industry standard / non-proprietary format

Extensive Networking Expertise

Safe Fleet is an established and experienced leader designing, implementing and supporting wireless infrastructure in agencies with fleets of over 4,000 vehicles. We are equally comfortable with agencies running smaller fleets that require less frequent demand for video evidence upload. We have built a team that project manages, implements and supports agencies regardless of size, resources and specific needs. Available agency resources include:



- A dedicated team of certified network engineers
- Over 70+ years of combined experience
- In-house engineering that encompasses infrastructure design, integration, validation and implementation
- Remote system monitoring and on-demand support
- Expertise and experience supporting multiple vertical markets with varying needs
- Proven track record for successfully supporting complex projects

Proven Wireless Network Reliability

Our deep expertise ensures architected networking solutions meet the most demanding needs. We have some of the largest cloud installations over any other company or industry. Some of our customers, store petabytes of data in the cloud and ingest up to 3 petabytes of data each day during standard business operations. This may equate to over 600 vehicles uploading over 3,545 video segments in a ten-hour shift.

1 PB = **1024 TB**
petabyte terabytes

Some of our customers ingest up to

3 petabytes of data each day

This may equate to over

600 vehicles uploading over **3545** video segments in a ten-hour shift



History Of Successful System Integration

Safe Fleet has extensive proficiency working with 3rd party vendors and industry partners. Implementation methodologies include project scope, schedule and design and development for customized solutions. Integration and data sharing drive innovation and enhance the benefits our products are known for.

We develop and publish APIs and SDKs. We support open architecture models that enable accelerated technology adoption, innovation and vendor selection flexibility. A few examples of past product integration within our mobile video product suite include:



Integration with multiple vehicle safety systems



Driver Performance



Live GPS Tracking



Safe Fleet® Predictive Stop Arm™ and Danger Zone Detection Systems



Stop-Arm Violation & License Plate Capture



Mobile Routers – Consolidation of Cloud Connectivity



Child / Theft Reminder Systems



Intelligent Transportation Systems (ITS)



Motion Activated PIR Sensors





SAFE  FLEET
Driving Safety Forward™

1285-Back-to-Basics-WP-SF-060522

Copyright ©2022 Safe Fleet and its subsidiaries. All rights reserved. No part of this publication may be reproduced by any means without written permission from Safe Fleet. The information in this publication is believed to be accurate. However, Safe Fleet does not make any representation or warranty to that effect and does not assume responsibility for any consequences resulting from use of such information. Revisions or new editions of the publication may be issued (or not issued) in our discretion to incorporate such changes.