

# Safe Fleet SFV9-HD

## 6-Channel Monitor/DVR Combo



Enhance Vehicle Operation, Safety and Performance with high-definition, while mitigating risk and providing service verification.



- Suitable for fleets that don't require cloud connectivity
- See what's happening inside and outside your vehicle for increased safety

Capture every angle around your vehicle in high definition video (up to 1080p) – reduce risk and improve customer service



### Gain Increased Coverage

The 9-inch touchscreen display can view and record footage from up to six cameras. The monitor features a split screen to view multiple cameras at once



### Benefit from Comprehensive Insight

A GPS receiver records vehicle location and speed for greater video footage insight



### Access Sizable Storage

Supports 2 SD Cards of up to 256GB each for a total of 512GB

# SFV9-HD: 6-Channel Monitor/DVR Combo

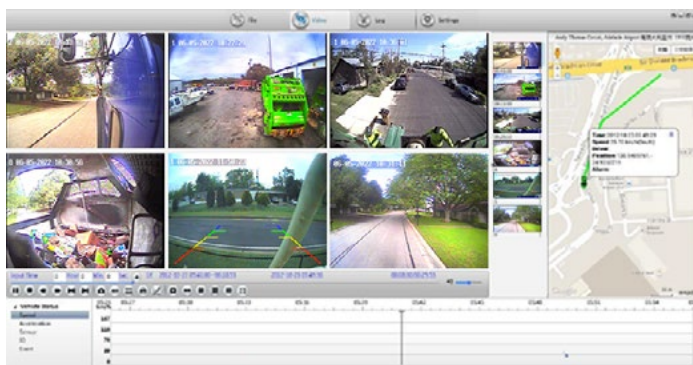
Perfect for Waste Haulers and Concrete Mixers who want to capture video inside and around the vehicle, but don't need cellular or Wi-Fi connectivity.

## Back-Office Video Playback, Data and MDVR Player

The SFV9-HD has removeable SD Card storage for videos and other related information, such as GPS and telemetry data (speed, acceleration, etc). The Media player features the functionality of a standard player (stop/play, slow/fast/ previous, next etc.)

### SFV9-HD Specifications

Item	Description
Panel Size	9 inch LED Digital Panel
Resolution	1280 x 720 x 3 (RGB)
Brightness	450 cd/m <sup>2</sup>
Contrast Ratio	500:1
Display Format	16:9
Video Inputs	6CH
Power Input	DC 9-36 V / Automatic Power On/Off by ACC
Operating Temperature	-4°F ~ +140°F (-20°C ~ +60°C)
Storage Temperature	-22°F ~ +185°F (-30°C ~ +85°C)
Weight	1lb 5 1/8 oz (600 g)
Trigger Inputs	6CH
External dimensions (not including the mounting bracket)	L 9.45" x W 6.46" x D 3.27" (L 240 mm x W 164 mm x D 83 mm)



The media player provides captured video, map location, associated telemetry and playback functionalities.

\*Above graphic for example purposes only.

DVR Monitor Parameter	Description
<b>SYSTEM</b>	<p><b>Main Processor</b> RV1126</p> <p><b>Operating System</b> Embedded Linux OS</p> <p><b>Operating Language</b> Chinese, English (default), French, Russian</p> <p><b>Operating Interface</b> Touch screen</p> <p><b>Password Security</b> User password/Admin password</p>
<b>AUDIO &amp; VIDEO</b>	<p><b>Image Resolution (Recorded Video)</b> 720P / 1080P</p> <p><b>Camera Configurations</b> <ul style="list-style-type: none"> <li>Up to 6 (six) 720P AHD video inputs -OR-</li> <li>A mix of up to 2 (two) 720P AHD and up to 4 (four) 1080P AHD video inputs</li> </ul> </p> <p><b>Frame Rate</b> <ul style="list-style-type: none"> <li>Up to 30 FPS for 720P</li> <li>Up to 25 FPS for 1080P</li> </ul> </p> <p><b>Audio Compression</b> G.711U</p> <p><b>Audio Recording</b> Audio and video synchronized recording</p>
<b>INTERFACE</b>	<p><b>Camera Inputs</b> 6 GX12 male 4-pin connectors</p> <p><b>Storage</b> <ul style="list-style-type: none"> <li>Up to 2 SDXC Class 10 SD card (maximum capacity 256GB each)</li> <li>2 keys are included for the SD card door lock</li> </ul> </p> <p><b>USB Interface</b> 1 USB 2.0 (support U disk/download); USB Type A connector</p> <p><b>Ignition Input</b> 1 ACC signal</p>

1416-SFV9-HD-BR-WR-022824

Copyright ©2024 Safe Fleet and its subsidiaries. All rights reserved. No part of this publication may be reproduced by any means without written permission from Safe Fleet. The information in this publication is believed to be accurate. However, Safe Fleet does not make any representation or warranty to that effect and does not assume responsibility for any consequences resulting from use of such information. Revisions or new editions of the publication may be issued (or not issued) in our discretion to incorporate such changes.

1.877.630.7366  
sfwrsales@safefleet.net  
safefleet.net/waste-recycling

**SAFE FLEET**  
Driving Safety Forward™