



Safety-As-A-Service Safe Fleet (SAAS) **Preventative** **Maintenance**

for Waste & Recycling

SAFE  FLEET

Driving Safety Forward™

Preventative Maintenance Program Overview

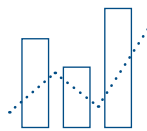
Safe Fleet Preventative Maintenance ensures your Safe Fleet systems are maintained by technicians qualified to diagnose and optimize the performance of your Safe Fleet systems.

Rely on Safe Fleet's team of system experts to help you:



MANAGE YOUR SAFE FLEET SYSTEM MAINTENANCE PROGRAM

Keep your entire fleet optimized.



MINIMIZE VEHICLE DOWNTIME

Get more done with your fleet.



GAIN PEACE OF MIND

Know your system performance has been optimized by system experts.



MINIMIZE RISK AND LIABILITY

Maximize the impact of high-quality evidence to reduce the impact of liability claims.



REDUCE OPERATIONAL COSTS

Vehicle systems are efficiently serviced, reducing the need to remove vehicles from fleet operations for hours at a time.

System Optimization for Maximum Performance



You've invested the time, energy and money acquiring industry-leading technology to help provide a safe and secure mode of transport for your vehicle operators. Maximizing the benefits of this investment by continuing to maintain the highest level of system performance depends on the regular optimization of your fleet systems.

Electronic equipment operating under harsh conditions with continuous shock and vibration stress, wide temperature swings and, in some cases, dirty and dusty environments drives the need for a

scheduled maintenance plan. Exterior cameras or externally mounted sensors are prime examples, and require periodic maintenance for optimal performance.

Your fleet systems are integral to the safety and efficiency of your operation every day. Proactive management to maximize overall system performance and extend equipment service life will help you continue to deliver security, safety and peace of mind for operators – consistent with the fundamental goals of your comprehensive safety program.

INCREASE FLEET UPTIME AND FLEET PRODUCTIVITY. REDUCE OPERATIONAL COSTS.

Entrusting your Safe Fleet systems to a team of skilled and knowledgeable technicians will result in faster, more reliable service and top-quality maintenance. If your fleet systems are being maintained by Safe Fleet system experts, your vehicles can be examined and repaired more efficiently (in some cases multiple vehicles can be inspected at the same time) and will be returned to active service faster, limiting the amount of vehicle downtime and saving a significant amount of operational costs.

PICK THE PROGRAM THAT WORKS BEST FOR YOU

Safe Fleet offers three preventative maintenance program options to meet your specific fleet needs. All three programs provide scheduled on-site preventative maintenance and repairs and the support activities outlined within this document. The individual program options reflect the frequency a certified Safe Fleet technician will visit your site annually.

- Quarterly Fleet Inspection
- Semi-Annual Fleet Inspection
- Annual Fleet Inspection

How it Works



A certified Safe Fleet Technician will travel to your site to inspect the Safe Fleet-supplied and Safe Fleet-installed video equipment on your fleet vehicles. The technician will:

- Physically inspect each of the main solution components as well as associated cabling and mounts for signs of excessive wear and tear or damage due to other causes.
- Verify data connections.
- Verify that each major system component is in good working order.
- Review overall health of the covered systems.
- Inspect connections between the different system components.
- Inspect the immediate area surrounding each component for any issues that may impair the proper functioning of the covered Fleet Safety Solution going forward.



What the Program Covers



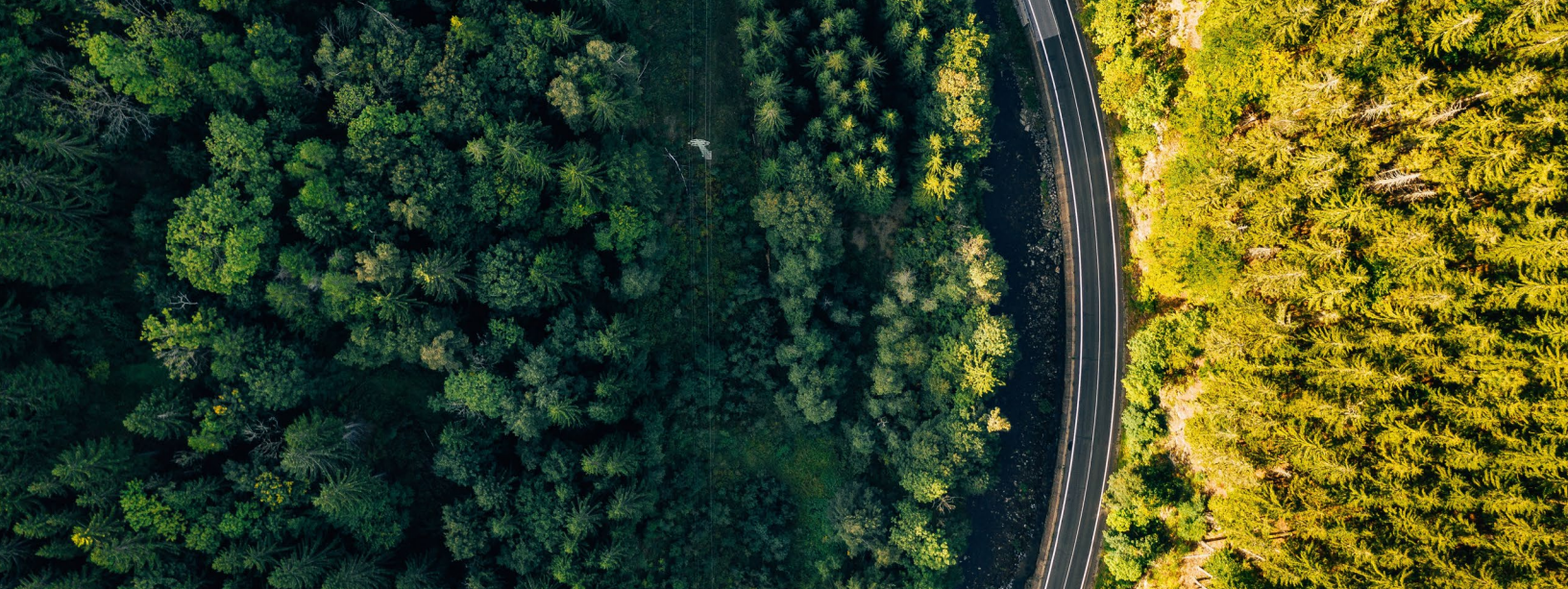
Safe Fleet Preventative Maintenance covers on-site, fleet-wide inspection of video equipment and related hardware by a certified Safe Fleet technician, including:

- Detailed Multi-Point DVR/Camera Inspection
- On-Site Repairs (if determined repairable)
- On-Site Replacement
(may require return visit) ***
- Camera Angle Adjustments
- Camera (accessible) and DVR Cleaning
- Recommendations provided for upgrades and replacements
- Handle Return Merchandise Authorization (RMA) Process
- Warranty/Non-Warranty Check
- Ship Warranty Parts for repair/replacement
- Ship Non-Warranty Parts for repair/replacement**
- Request quote for Non-Warranty replacement Parts
- Install Repaired/Replaced Warranty Parts*
- Install Repaired/Replaced Non-Warranty Parts* (Subject to repair/replacement quote approval)
- Return Trip for follow-up remediation for failed equipment not repairable during Inspection
- Travel

* Full Length/Extensive Re-cabling not included

** Subject to diagnostic fee

*** Highly recommend customer maintains spares kit



Customer Portal for viewing Safe Fleet Vehicle On-Site Inspection

Safe Fleet provides a portal for customers to access the status and results of your vehicle inspections. The following information is provided:

- Review in-progress on-site Inspection Status.
- Vehicle status after inspection (Available, Warning, Due for Repair).
- Pass/Warning/Fail status after completion of vehicle inspection.
- Review pictures taken during the Site Inspection.
- View all vehicles inspection details.
- Access high level overview down to individual inspection detail.
- Report is updated once remediation has occurred by Safe Fleet technician with notes.



For more information about Safe Fleet's Preventative Maintenance Program,
Contact your Safe Fleet Sales Representative today.

How to Sign Up

To purchase, or for more information
contact your area sales rep



1.888.514.7443

sfwrsales@safefleet.net

This brochure is intended to provide a high-level summary of the Preventative Maintenance Program. Contact your Safe Fleet Sales representative for documentation covering full program details and associated Standard Customer Terms & Conditions and Preventative Maintenance Services Terms & Conditions.



Safe Fleet has a vision to reduce preventable deaths and injuries in and around fleet vehicles with a goal of helping our customers achieve ZERO accidents. To that end, Safe Fleet's best-of-breed smart solutions form an integrated safety platform for fleets of every type.

With our broad portfolio of market-leading safety solutions, 1,700 employees, and 14 manufacturing locations across North America, also serving Europe, Asia and the rest of the globe, Safe Fleet continues to innovate and deliver the smart solutions that fleets will need to survive and thrive in a changing world — and ensure that drivers, passengers and pedestrians arrive home safely.

Safefleet.net

1177-Preventative Maintenance-BR-WR-012621

Completion of a Safe Fleet Preventative Maintenance Program inspection (an "Inspection") does not guarantee system performance, nor does it prevent all issues, including the need for further repairs, replacements or adjustment of parts. Safe Fleet does not warrant or guarantee that any given problem will be solved or that system components will be error-free. Normal deterioration of equipment and/or wear and tear will still occur, which can impact system performance or require the further repair, replacement or adjustment of parts. An Inspection also does not remove or replace the need for routine, regular maintenance and inspection of Safe Fleet parts and systems as specified in the applicable manuals and other materials made available for the subject parts or systems. Further, completion of an Inspection cannot prevent all incidents involving the subject vehicle. Human error and behavior by drivers, passengers, pedestrians, and other persons, weather, and other factors can impact system reliability and performance. Safe Fleet will under no circumstances be liable for special, indirect, incidental or consequential damages resulting from the performance of an Inspection.