

A DVR for Any Vehicle

HD and Full HD Video Recorders



GEOTAB
management by measurement

Seamlessly integrate and pull up video and DVR data with Geotab Platform



- Up to 2.5 TB Storage Capacity
- Military Grade Vibration and Shock Rating
- Up to 17 Recordable Camera Channels



Built for the Road

Sturdy, vibration-proof recorders allow for stable performance



High-Capacity Storage

Capture and retain footage from up to 17 cameras



Easy Incident Review

Built in GPS and 4G capability enable easy incident detail capture, remote viewing, tracking and footage download

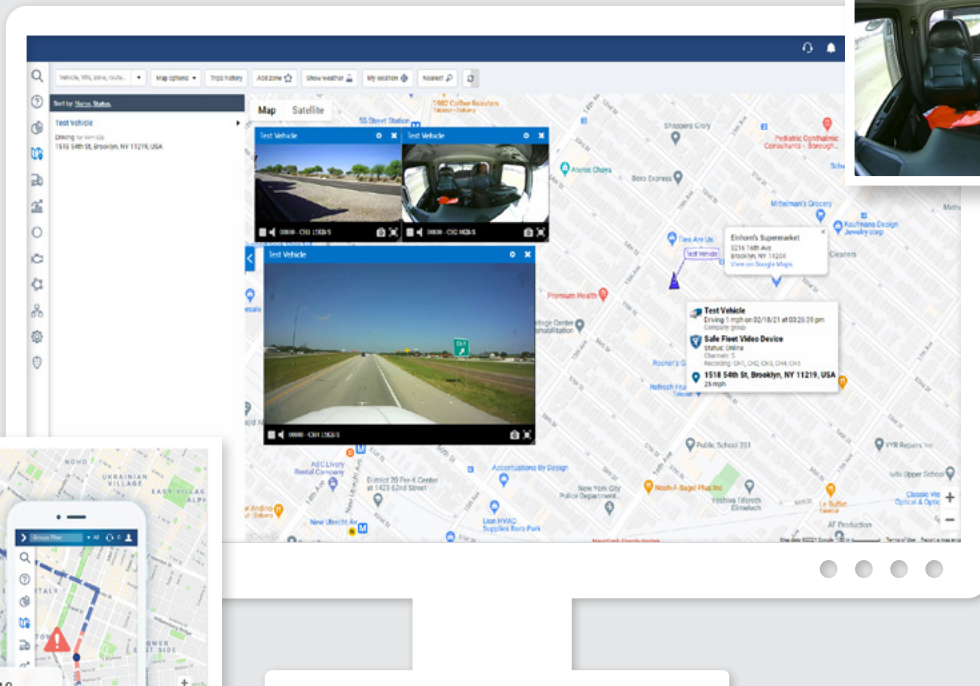
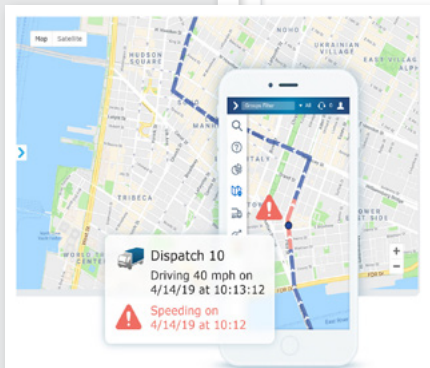


Driving Safety Forward™

Capture Clear Evidence



Access video and create clips quickly to prove what really happened



Zoom in on key details to capture critical data



View Route Traveled synchronized with video for a complete event overview

MobileMule™ Series HD and FHD Recorders

TRONG

- Records from integrated Full 1080p HD Driver and Road Cameras
- Live Remote Viewing (with personal data plan)
- Free Gateway Hosting - No Recurring Fees
- Records onto (2) 256 GB SD cards (optional)
- USB input - attach an external hard drive up to 2TB

5550 SERIES

- Connect up to (5) five cameras simultaneously
- Built-in GPS - records location and driving route
- Records to lockable 1TB Western Digital Hard Drive
- Built-in Ethernet Port - Easily connect forward facing IP camera

8117 SERIES

- 17 Channels including IPC
- 720p HD + IPC 1080p HD
- Storage: HDD/SSD up to 2TB + SD card (up to 128GB)
- Built-in WiFi
- Live Video Remote Viewing
- Power Loss Protection
- HD Compatible - can connect and record HD cameras

1080 SERIES

- Full HD 1080P Mobile DVR
- Connect and record up to five (5) cameras simultaneously
- Free Gateway Hosting - No Recurring Fees
- Built-in Ethernet Port - Easily Connect Forward Facing IP Camera
- Records onto Up to 2TB Hard Drive

Easy Add-Ons:



Wi-Fi Automatic Video Downloads



Live GPS Tracking



Live View Remote Viewing

MobileMule™ DVR Series

Copyright ©2020 Safe Fleet and its subsidiaries. All rights reserved. No part of this publication may be reproduced by any means without written permission from Safe Fleet. The information in this publication is believed to be accurate. However, Safe Fleet does not make any representation or warranty to that effect and does not assume responsibility for any consequences resulting from use of such information. Revisions or new editions of the publication may be issued (or not issued) in our discretion to incorporate such changes.



800.764.1028
rearviewsafety.com

